

IMPORTANT!

KEEP FOR FUTURE REFERENCE

READ INSTRUCTIONS FULLY BEFORE USE

Child Carrier Rain Cover: L10621

For use with: LittleLife Voyager S2, Freedom, Cross Country S2, Traveller S2, All Terrain & Cross Terrain.

FITTING AND USE

- 1 PREPARATION:** Remove from the carry bag and unfold.
- 2 ASSEMBLE THE FRAME:** The tubular frame is folded into sections and joined with an elastic cord. Align each section with the next and push together to form a smooth join.
- 3 FIT TO THE CARRIER:** Insert the two pole ends into the rectangular pockets on the carrier (located at either side of the carrier on the side wings).
- 4 ALIGN THE FABRIC:** Pull the fabric over the base of the carrier ensuring that the front panel is in position, covering the entire child's cockpit area.
- 5 SECURE IN PLACE:** At the base of the carrier, pull the elasticated cord through the cord lock to secure in place.

DISASSEMBLY

Disassembly is the reverse of the assembly procedure described. Store the rain cover in the carry bag to prevent loss or damage.

CARE INSTRUCTIONS

To remove dirt, lightly brush with a soft brush or use a damp cloth and mild liquid soap. Do not machine wash. Do not bleach. Do not store when damp.



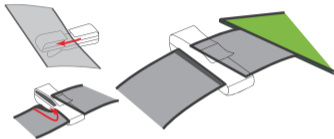
i-L10621-01 11.10
© Lifemarque Limited 2010

Rain Cover Instructions:

- 1- Remove rain cover from the stuff sack and assemble the poles together within the cover.
- 2- Place the pole ends into the two pockets on the top of the carrier.
- 3- Thread the webbing straps at the bottom of the zip opening through the corresponding plastic attachment loops on the carrier and secure in place.
- 4- Fasten the straps across the carrier back support and underneath the base of the carrier.

Adventurer S2 Elastic Attachment

- 1- Attach clip to the shoulder strap webbing.



- 2- Hook on the elastic loop.

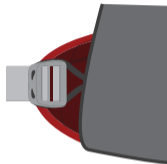


If you have not received the plastic hook attachment or have an Adventurer S1 please email:

customer.services@littl life.com

Ranger Elastic Attachment

Attach elastic loop around waist tension lock.



Cross Country Elastic Attachment

Attach elastic loop around small tension lock.

